

Kondensator im Wechselstrom

Heun²

Frequenz in Hz	Spannung	I in mA
100	8,8 mV	1,89 mA
200	17,4 mV	3,7 mA
300	26,17 mV	5,6 mA
400	34,91 mV	7,4 mA
500	43,33 V	9,2 mA
600	0,517 V	11 mA
700	0,598 V	12,7 mA
800	0,681 V	14,5 mA
900	0,759 V	16,1 mA
1000	0,830 V	17,8 mA
1500	1,203 V	25,6 mA
2000	1,505 V	32,0 mA
2500	1,751 V	37,3 mA
3000	1,946 V	41,4 mA
3500	2,103 V	44,7 mA
4000	2,232 V	47,5 mA
4500	2,326 V	49,5 mA
5000	2,405 V	51,2 mA

Schaltplan:

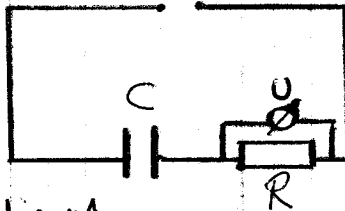
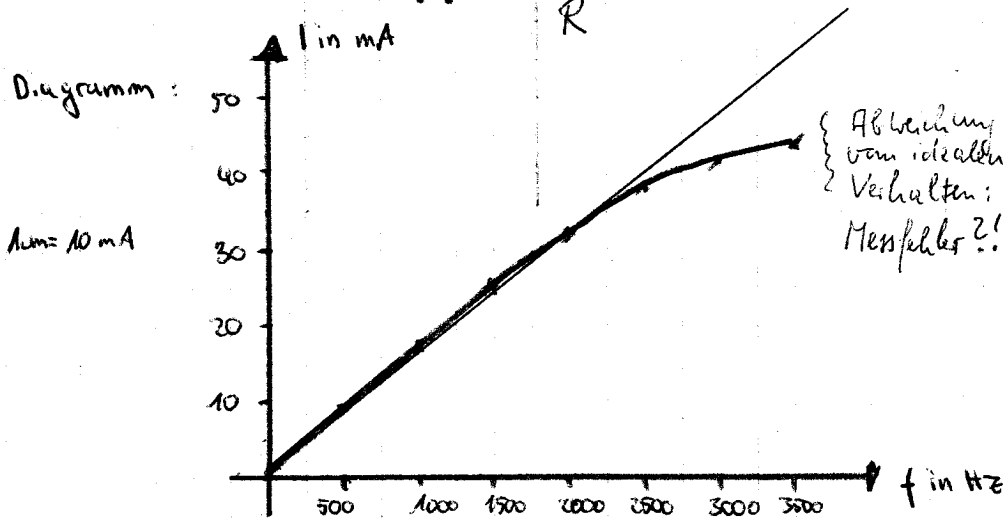


Diagramm:



$I_{\text{eff}} = 10 \text{ mA}$

$f_{\text{eff}} = 500 \text{ Hz}$